

FOR SALE

CAROLINA
COMMERCIAL, LLC
REAL ESTATE SOLUTIONS

Commercial Land

0 LUKEN ROAD, HANAHAN, SC 29410



SALES PRICE:	\$300,000
SITE SIZE:	8.09 ACRES
TMS #:	252-00-00-027
ZONING:	LIGHT INDUSTRIAL
COUNTY:	BERKELEY

- Great Visibility on Frontage Road Facing North Rhett Ave.
- Convenient to I-26 & I-526
- 6 Miles North of the Port of Charleston/N. Charleston
- 7 Miles from Charleston International Airport
- Property Contains 2.41 Acres of Fresh Water Wetlands

FOR MORE INFORMATION CONTACT:

DAN BATTEN

dan@carolinacre.com

843.509.9824

751 Johnnie Dodds Blvd. #200

Mt. Pleasant, SC 29464

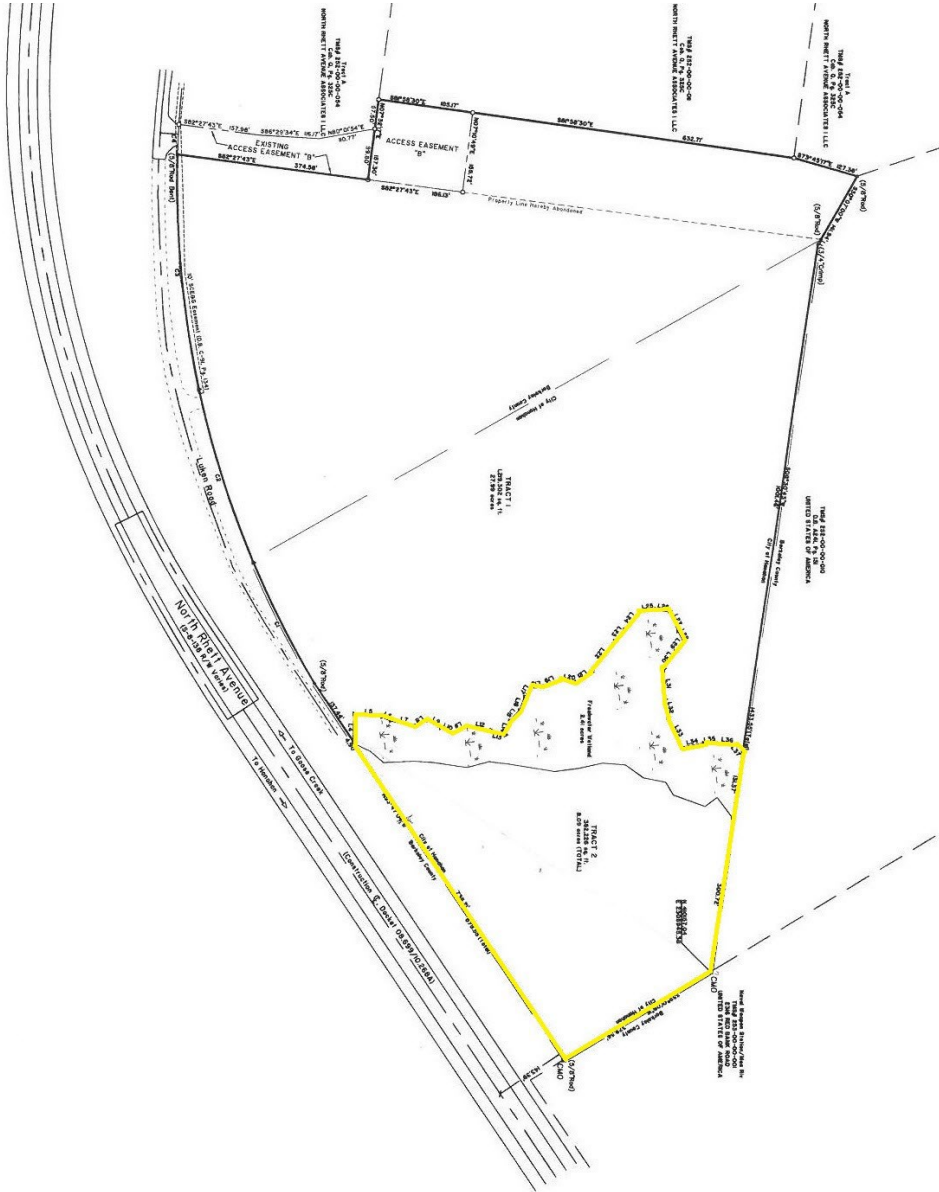
843.805.6060 ext. 15

www.carolinacre.com

FOR SALE

Commercial Land

0 LUKEN ROAD, HANAHAN, SC 29410



The information contained herein has been obtained from sources deemed reliable but not warranted, guaranteed or represented as to the completeness for accuracy by Carolina Commercial, LLC.

FOR MORE INFORMATION CONTACT:

DAN BATTEN

dan@carolinacre.com

843.509.9824

751 Johnnie Dodds Blvd. #200

Mt. Pleasant, SC 29464

843.805.6060 ext. 15

www.carolinacre.com